

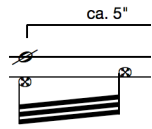
mat martin
prélude [totem i]
for solo bcl with optional drone
2003

for christopher cundy

© 2003 mat martin / flatpack music

mat martin
prélude [totem i]
for solo bcl with optional drone
2003

explanation of symbols used in the score :



produce air tone accompanied by quick pitchless key slapping sounds



note finished with a short, sharp reed slap



beginning with the single pitch indicated by the grace note, produce a multiphonic chord of undefined pitch content.

for christopher cundy
 prélude (totem i)

tempo i : ♩ - ca. 40 [heavy, powerful]

tempo ii : ♩ - ca. 70 [♩ - ca. 140] [declamatory, authoritative]

tempo iii : ♩ - ca. 70 [peaceful, humble]

tempo iv : ♩ - ca. 55 [agile, tentative]

inclusion of a drone on a low F# (sounding pitch, on any instrument) is optional.

mat martin

without strict tempo tempo i : ♩ - ca. 40 tempo ii : ♩ - ca. 70

sotto voce : undulating liquid

ca. 5"

bcl

ppp *f* *p* *pp*

tempo iii : ♩ - ca. 70 tempo iv : ♩ - ca. 55 tempo i [sempre sim.] tempo ii

dormant

15

ca. 5"

bcl

pp *f* *p* *f* *p* *pp*

tempo iii [sempre sim.] tempo iv without strict tempo

sotto voce : undulating

15

bcl

pp *f* *p* *ppp*

tempo iv tempo iii tempo ii

ca. 8"

bcl

f *p* *pp* *pp* *p*

tempo i tempo iii tempo ii tempo i

15

bcl

f *pp* *p* *f*